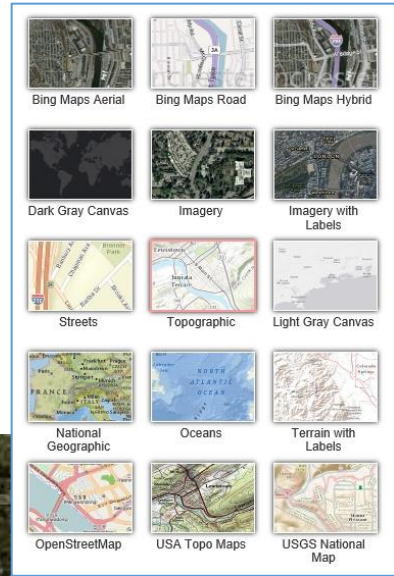
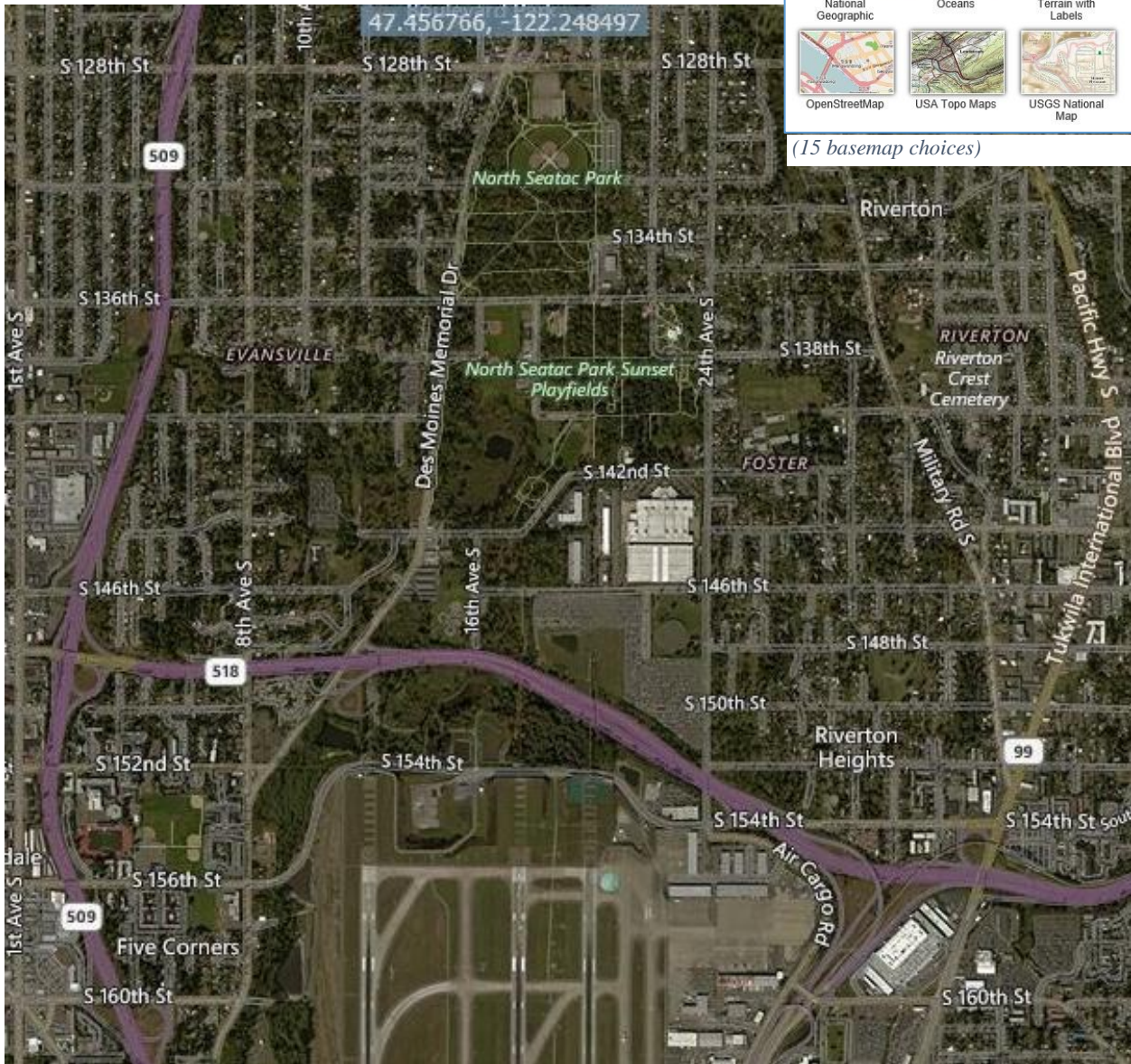


'EJSCREEN' is EPA's Environmental Justice Screening and Mapping Tool. The 2016 Version, viewable online at <https://ejscreen.epa.gov/mapper/>, is data-rich. EJSCREEN taps numerous databases, offering a variety of basemap images (see image at right), ranging from aerial photos, street maps, thematic maps, and even down to property/lot boundaries.

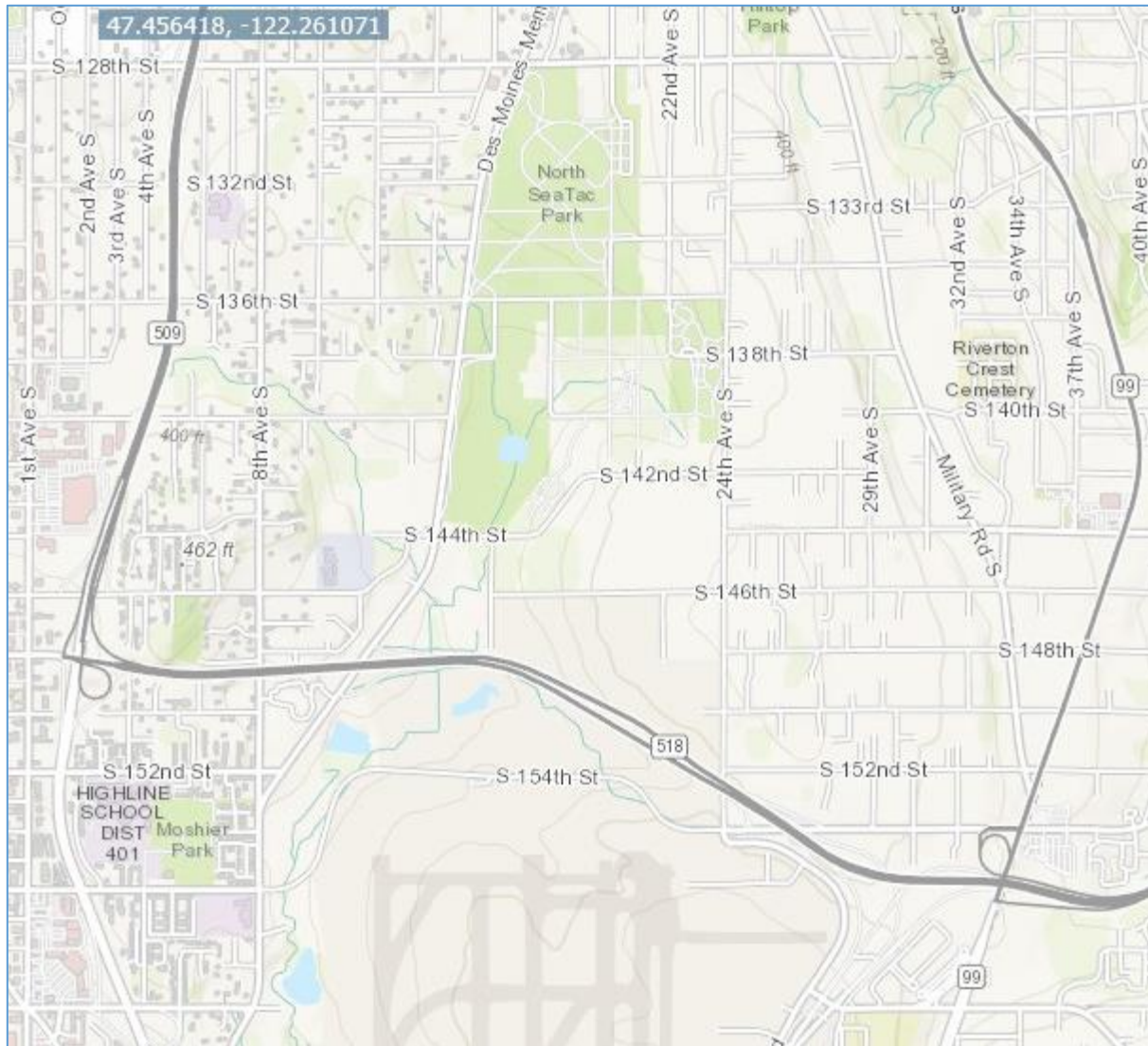
The following pages offer some samples – screencap images, showing views for an area to the north of the SeaTac Airport [[KSEA](#)]:



(15 basemap choices)



'Bing Maps Hybrid view'

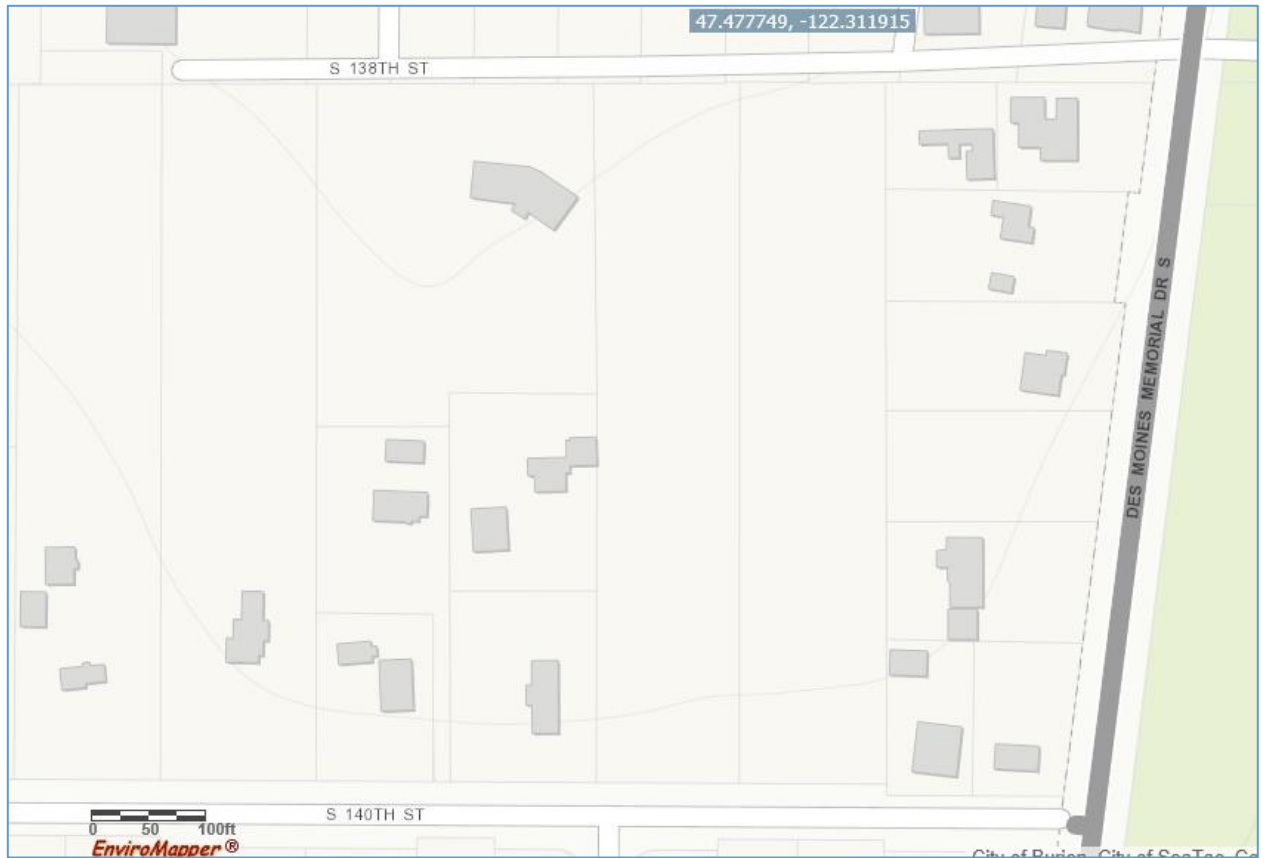


*'Topographic view'*

The image on the next page is a blowup of the above, focused on a residential area to the south of S 136<sup>th</sup>, and the west of Des Moines Memorial Drive.

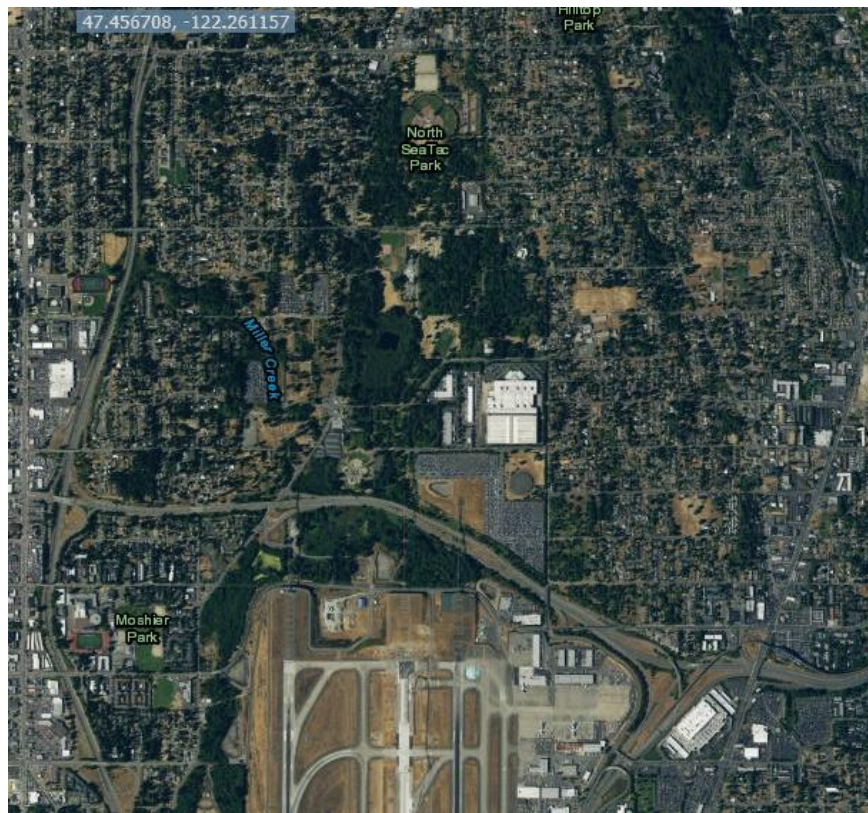




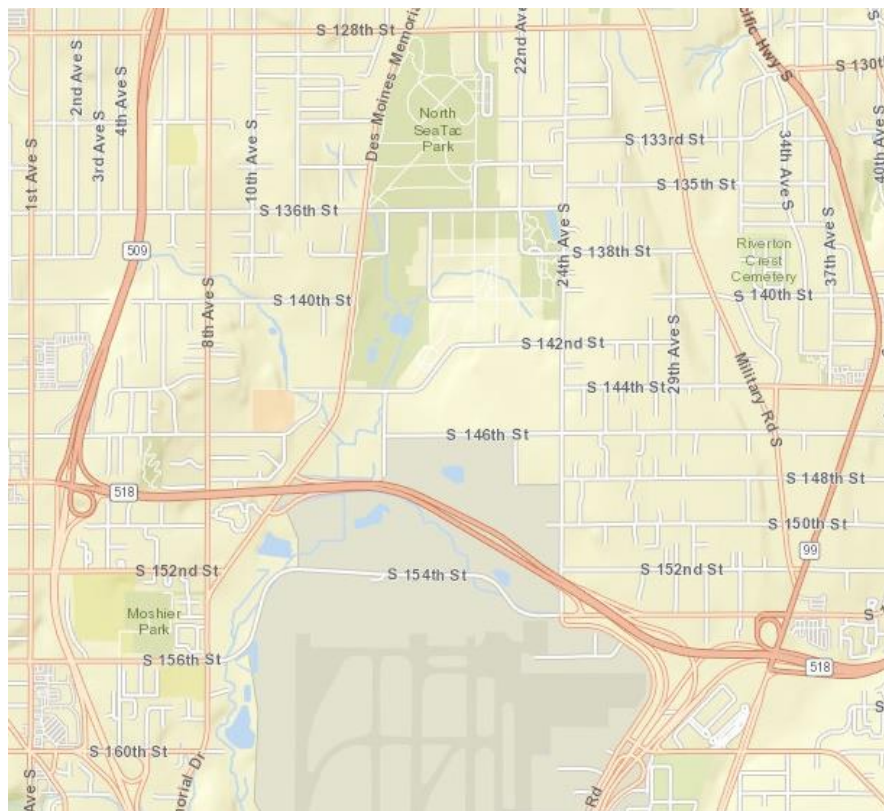


*'Topographic view, blown up even further, to show structures & lot boundaries'*

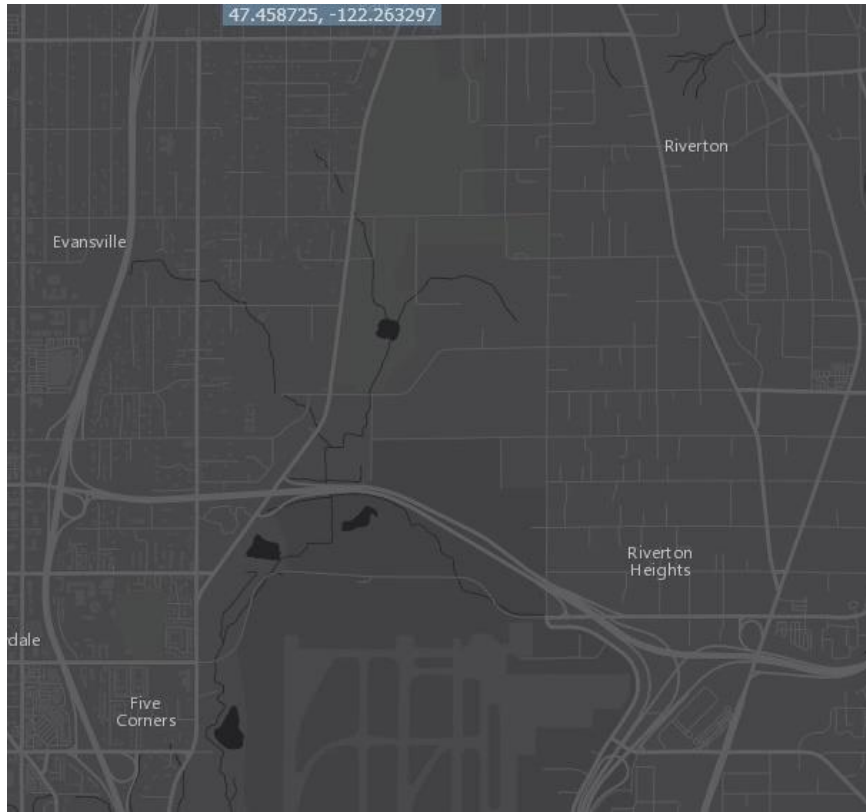
Lastly, the following pages offer a collection of six other basemap views:



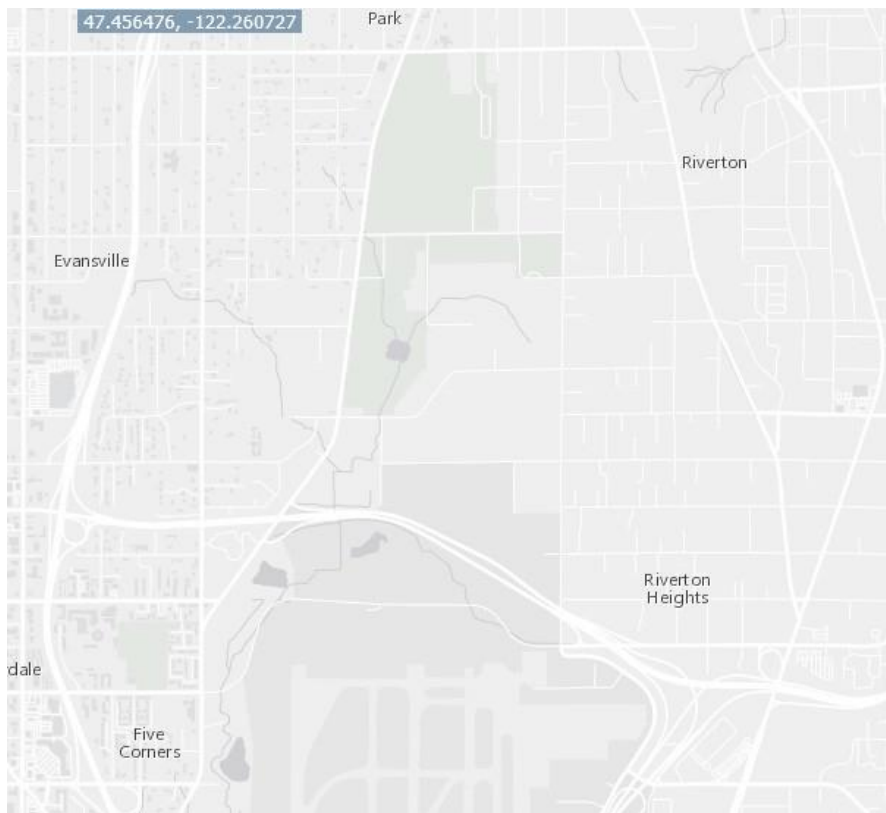
*'Imagery w Labels view'*



*'Streets view'*

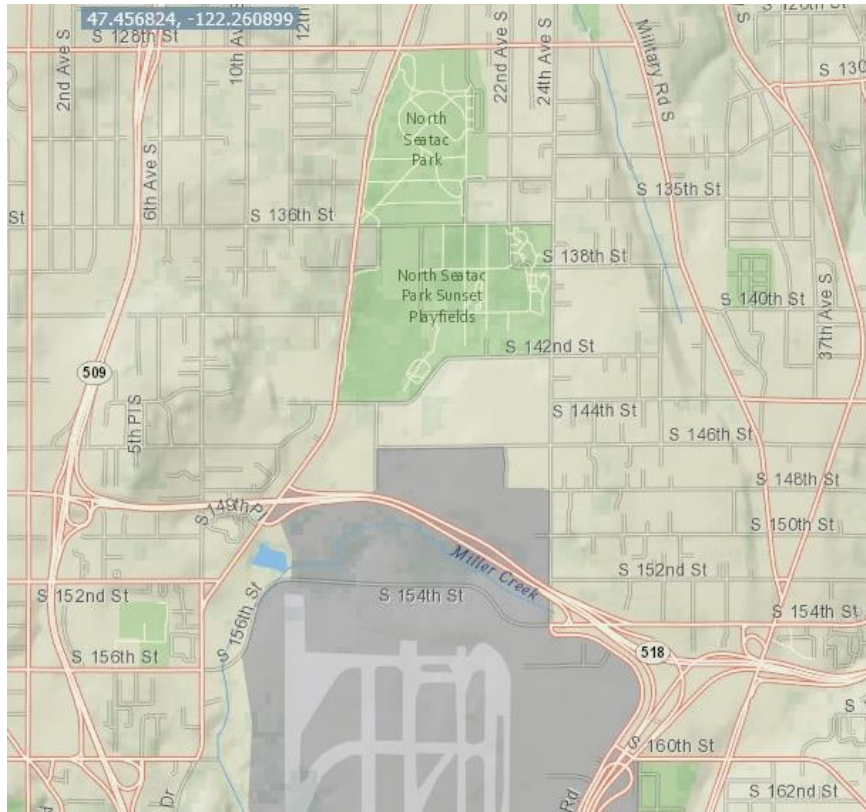


*'Dark Gray Canvas view'*

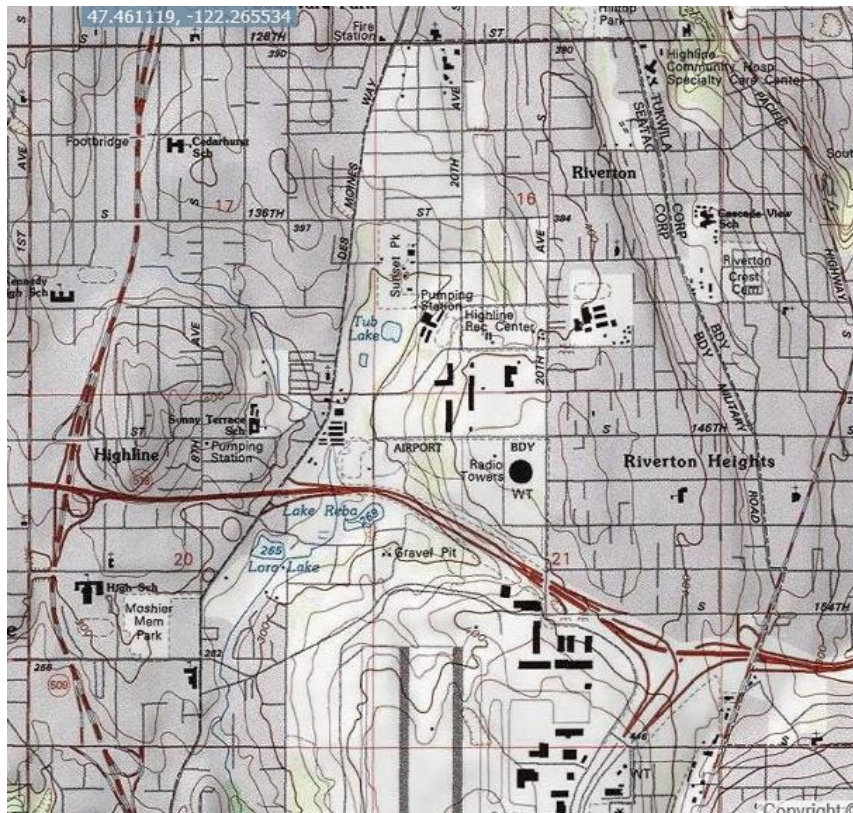


*'Light Gray Canvas view'*





*'National Geographic view'*



*'USA Topo Maps view'*