

LOC/DME I-BXO 111.3 Chan 50	APP CRS 183°	Rwy Idg 7099	THRE 644	Apt Elev 650
--	------------------------	------------------------	--------------------	------------------------

LOC RWY 18

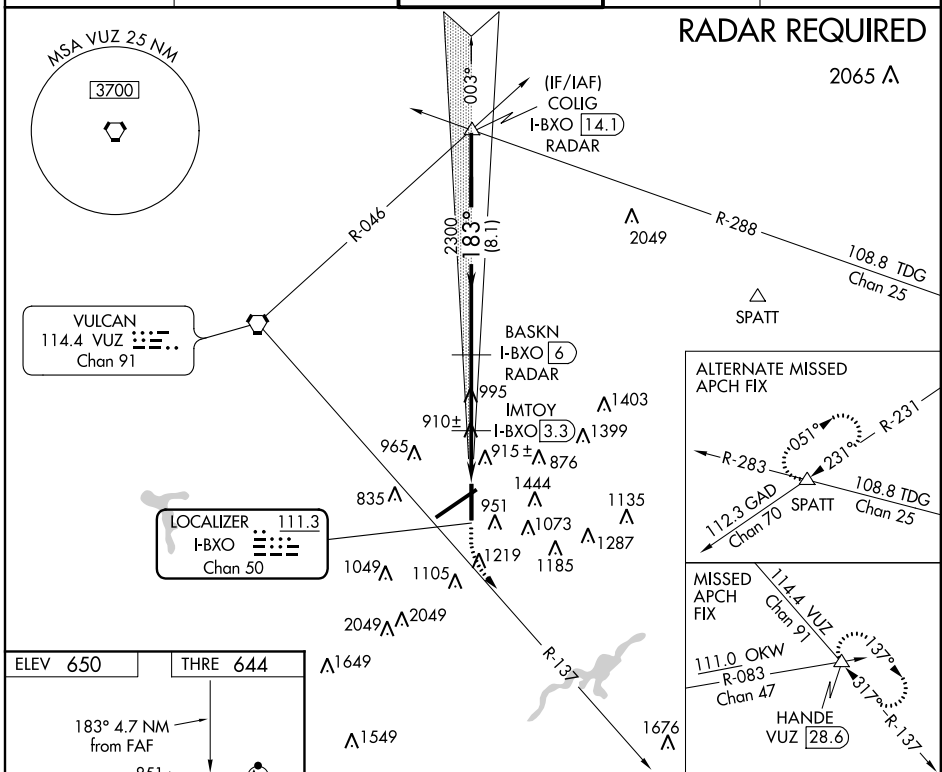
BIRMINGHAM-SHUTTLESWORTH INTL (BHM)

∇ DME or Radar required.
Visibility reduction by helicopters NA.
When VGSI inop, procedure NA at night.

MISSED APPROACH: Climb to 1500 on heading 183° then climbing left turn to 3800 on VUZ VORTAC R-137 to HANDE INT/VUZ 28.6 DME and hold.

ATIS 119.4 270.1	BIRMINGHAM APP CON 123.8 256.8	BIRMINGHAM TOWER 119.9 317.725	GND CON 121.7 348.6	CLNC DEL 125.675 305.2
----------------------------	--	--	-------------------------------	----------------------------------

RADAR REQUIRED



SE-4, 25 JUL 2013 to 22 AUG 2013

SE-4, 25 JUL 2013 to 22 AUG 2013

ELEV 650	THRE 644
----------	----------

183° 4.7 NM from FAF

860 Δ 851 \star 81 Δ

0.7% DOWN

11998 X 150

TWR 775 \pm

7099 X 150

36 Δ 747 \pm

REIL Rwy 18 and 36
TDZ/CL Rwy 6
HIRL Rwy 6-24
MIRL Rwy 18-36

FAF to MAP 4.7 NM

Knots	60	90	120	150	180
Min:Sec	4:42	3:08	2:21	1:53	1:34

1500	3800	HANDE Δ	BASKN I-BXO (6) RADAR	COLIG I-BXO (14.1) RADAR
hdg 183°	R-137			

IMTOY I-BXO (3.3) RADAR

3.28° TCH 48

1380

2300

183°

3500

Procedure Turn NA

CATEGORY	A	B	C	D
S-18	1380-1	736 (800-1)	1380-2	736 (800-2)

IMTOY FIX MINIMUMS

S-18	1200-1	556 (600-1)	1200-1½	556 (600-1½)
------	--------	-------------	---------	--------------