

National
Transportation
Library

Topics and Geography

Statistical Products and Data

About BTS

OST-R > BTS

Select a month: (The month selection does not apply to on-time data.)

Select an airport: [Show all airports \(by state\)](#)

Baltimore, MD: Baltimore/Washington International Thurgood Marshall (BWI)

Scheduled Services except Freight/Mail

BTS Data as of 7/18/2018

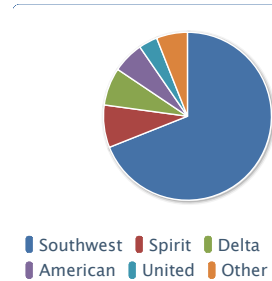
Summary Data (U.S. Flights Only)

Passengers*	2017**	2018**	%Chg	Rank***
Arrival	11,910k	12,585k	5.67%	21
Departure	11,941k	12,619k	5.68%	20
Scheduled Flights				
Departures	107,009	114,024	6.56%	22
Freight/Mail (lb.) (Scheduled and Non-Scheduled)				
Total	249m	408m	63.78%	28
Carriers				
Scheduled	26	26	0.00%	

* Scheduled enplaned revenue passengers.
 ** 12 months ending April of each year.
 *** Among 797 U.S. airports, 12 months ending April 2018

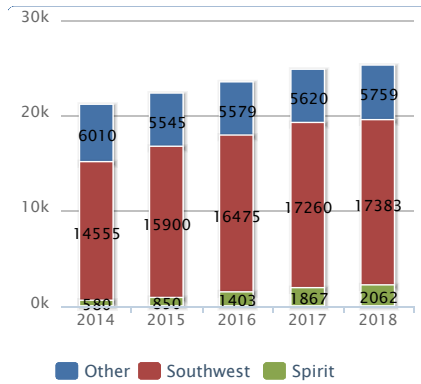
Carrier Shares for May 2017 - April 2018

Carrier	Passengers	Share
Southwest	17,383	68.97%
Spirit	2,062	8.18%
Delta	1,831	7.27%
American	1,511	5.99%
United	911	3.61%
Other	1,507	5.98%



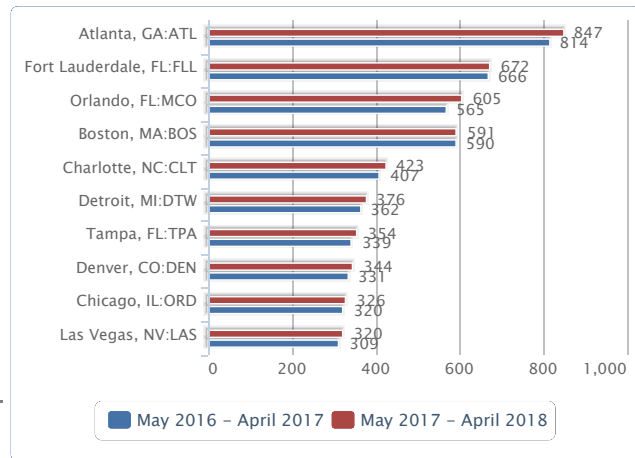
Based on enplaned passengers(000) both arriving and departing.

Total Passengers (U.S. Flights, in thousands)



* Before October 2002, only carriers operating aircraft with more than 60 seats or 18,000 pounds in payload reported traffic data.
 ** 2018 represents data for May 2017 - April 2018.

Top 10 Destination Airports (U.S. Only, Passengers (000))



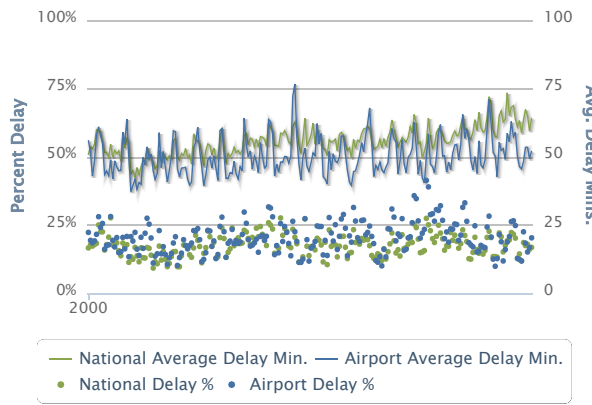
Source: T-100 Domestic Market (US Carriers).

BWI vs. National Departure Delays (Major U.S. Carriers)

BWI On-Time Performance Summary (Major U.S. Carriers Only)

Domestic Flights, 2013-2018

% On Time	2013	2014	2015	2016	2017	2018*	Rank**
Departure	74%	71%	74%	80%	79%	79%	21
Arrival	79%	77%	81%	83%	82%	83%	11
Avg Delay (min.)							
Departure	49.94	51.16	54.72	54.96	54.36	53.87	4
Arrival	51.22	53.79	55.18	56.34	55.43	55.72	8
% Cancelled							



A flight is considered delayed when it arrived or departed 15 or more minutes than the schedule. Delayed minutes are calculated from delayed flights only.

Total	0.95%	1.75%	1.65%	1.71%	1.71%	1.80%	18
Number of Flights (000)							
Total	100.3	90.9	94.1	96.2	101.0	104.1	
Number of Reporting Carriers							
Total	13	11	11	9	10	15	

* May 2017 - April 2018 .

** Ranked only for major U.S. airports, May 2017 - April 2018.

BUREAU OF TRANSPORTATION STATISTICS
 U.S. Department of Transportation
 1200 New Jersey Avenue, SE
 Washington, DC 20590
 855-368-4200

[Sign up for Email Updates](#)

[Contact Us](#)

[Acronym Guide](#)

[Ask a Librarian](#)

[Dictionary of Transportation Terms](#)

[DOT Data Inventory](#)

[FAQs](#)

[Connections Blog](#)

[Fedstats](#)

[Jobs and Internships](#)

[National Transportation Library](#)

[Office of the Assistant Secretary for Research and Technology \(OST-R\)](#)

[U.S. DOT](#)

[Search for on-time flight data](#)

[Accessibility](#)

[Privacy Policy](#)

[Information Quality](#)

[Web Policies](#)

[FOIA](#)

[Civil Rights](#)

[Ethics](#)

[OIG Hotline](#)

[Office of the Inspector General](#)

[No Fear Act](#)

[Buy America](#)

[BusinessUSA](#)

[USA.gov](#)

[Whitehouse.gov](#)